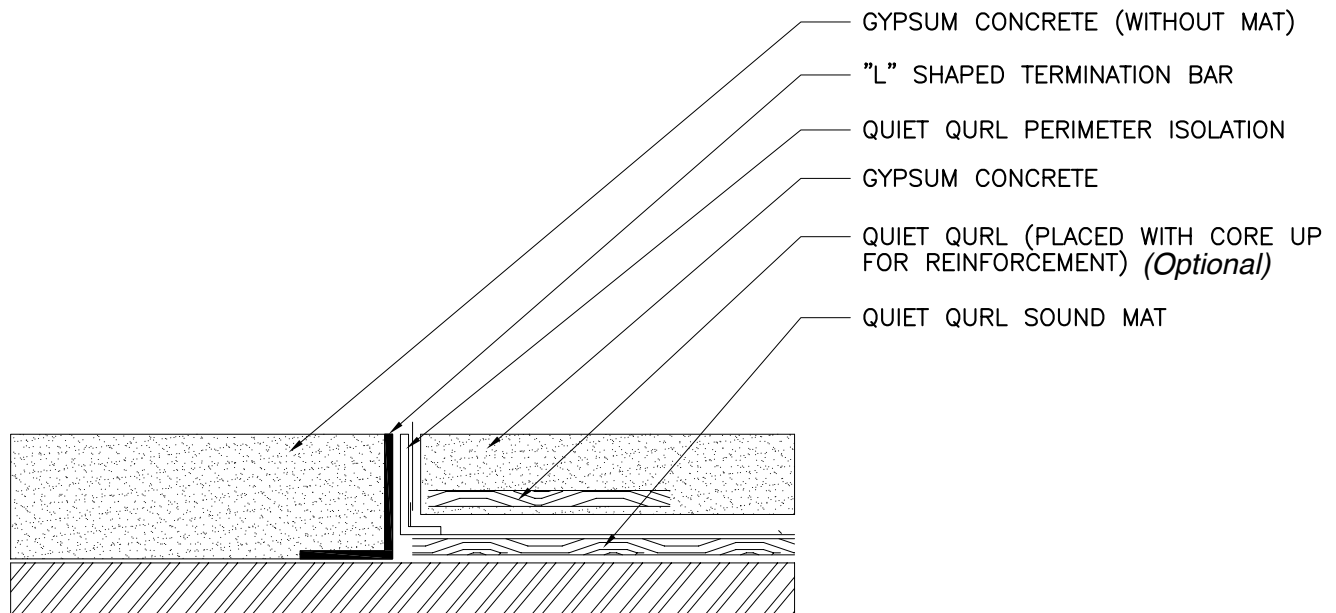


In Building Design

KEENE IDEAS®

Transition to FIRM-FILL® Gypsum Concrete without mat Quiet Qurl® Installation in Hard Surface Areas



1. Prior to Installation of QUIET QURL® install "L" shaped termination bar at the transition point of hard surface floor to the area of no hard surface flooring.
2. Install "L" shaped termination bar with bottom leg toward the area without QUIET QURL®.
3. Install QUIET QURL® Impact Sound Mat.
4. Install QUIET QURL® Perimeter Isolation at all required areas & adjacent to the mat side of the "L" shaped termination bar.
5. Tape flat to wall, covering the top of the perimeter isolation with the duct or cellophane tape.
6. Tape flat to the Quiet Qurl® on the floor.
7. Assure that the transition does not contact subfloor with a droop.
8. Pump FIRM-FILL® Gypsum Concrete per installation instructions from Hacker Industries.

2011/1

Notice to Specifiers, Contractors & Architects:

These technical drawings are offered as representative results with laboratory conditions. Field results will vary depending upon many factors outside of Keene Building Products™ control including but not limited to installation, lighting design, plumbing design & methods of construction. Keene Building Products™ Incorporated cannot assume any liability for the manner of installation of its products, which manner is left to the buyer in conjunction with the buyer's construction documents.