

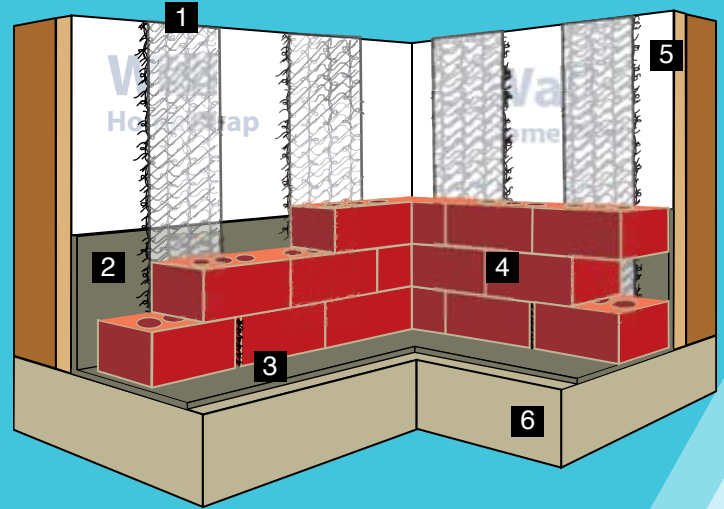


Driwall™ Masonry Vent System
Thin Cavity Wall Application

Driwall™ Masonry Vent System 4.0-040 is designed for thin-cavity wall applications, specifically for residential homes where the usual cavity space is an inch or less.

This revolutionary product is placed vertically in the cavity and connected to the weep vents to provide drainage where it is most effective – at the weep vents.

- 1 Driwall™ Masonry Vent System 4.0-040
- 2 Flashing
- 3 Driwall™ Weep Vents
- 4 Brick
- 5 Weather-resistive barrier (WRB)
- 6 Foundation



Driwall™ Weep Vents create a space for moisture to drain and vent in a brick cavity wall. They are placed in the vertical head joint of a brick wall approximately every two feet. Please see our Driwall™ Weep Vents data sheet for more information.

Benefits

- ✓ Cavity drainage and ventilation of the cavity
- ✓ GUARANTEED to stop mortar from clogging weep holes when properly installed
- ✓ Simple installation with staple hammer
- ✓ Perfect thickness to work in minimum cavity walls where a mortar dam occurs at each brick course
- ✓ Suspends mortar droppings above weep hole while providing drainage through the use of a non-woven fabric



Placed vertically, approximately every 2 feet on center





Driwall™ Masonry Vent System

Product	Thickness	Length	Core Width	Roll Dimension	Roll Weight	Applications
Driwall Masonry Vent System 4.0-040	0.375 in./9.0 mm	100 ft.	4 inches	20x20x4 in.	4.3 lbs.	Commercial and residential masonry cavity walls, stone masonry, and traditional stucco

Accessory Product

Driwall Weep Vents	0.375 in./9.0 mm	(Each Weep Vent is 2.5" x 3.5" / 100 per box)				Commercial and residential masonry cavity walls, stone masonry, and traditional stucco
---------------------------	------------------	---	--	--	--	--

For a complete list of all our products, please contact KBP, or visit our website at www.KeeneBuilding.com

Applications

- ✓ Commercial and residential masonry cavity walls 1.0 inch thick or less
- ✓ Commercial and residential masonry cavity walls greater than 1.0 inch with additional insulation
- ✓ Stone masonry applications
- ✓ Traditional stucco applications

Solution for Thin Cavity Walls

Driwall™ Masonry Vents System 4.0-040 is placed vertically approximately every 2 feet on center. The material contains extruded polymer filaments that are heat laminated to a non-woven fabric to prevent any mortar from entering the drainage area. The system is economical for developers and connects the mortar dams that occur at each course, creating a ventilation net behind the entire wall. This product is Class A fire-rated.



P.O. Box 241353

Mayfield Heights, OH 44124

Info@KeeneBuilding.com

www.KeeneBuilding.com

877 | 514 | 5336

P 440 | 605 | 1020

F 440 | 605 | 1120