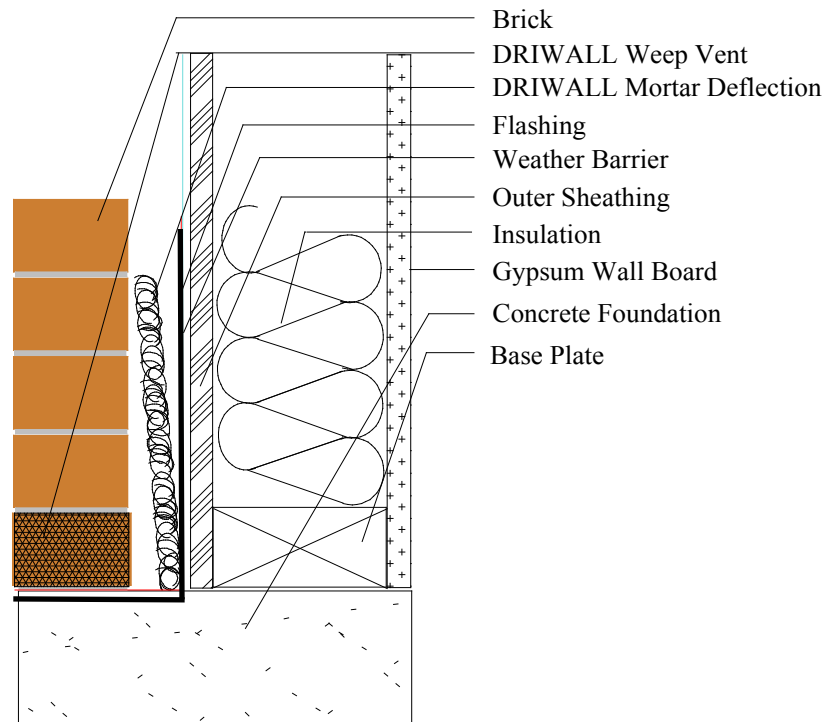


Installation Instructions

Driwall™ Mortar Deflection in Masonry

A Masonry Drainage Device



Straight-Strip Mortar Deflection

Inspection of Membrane and Wall Conditions

Ensure that the wall is free from structural defects, that any membranes, flashing and/or insulation are properly installed, and that the final system will have a path for moisture to escape from the wall.

Installation of Driwall Mortar Deflection

Driwall™ Mortar Deflection can be installed by simply placing a continuous strip in the cavity at all flashing locations. Place horizontally on top of the flashing to ensure that the mortar droppings are broken up and deflected away from the weep holes. Mechanical attachment is not required.

2011/1