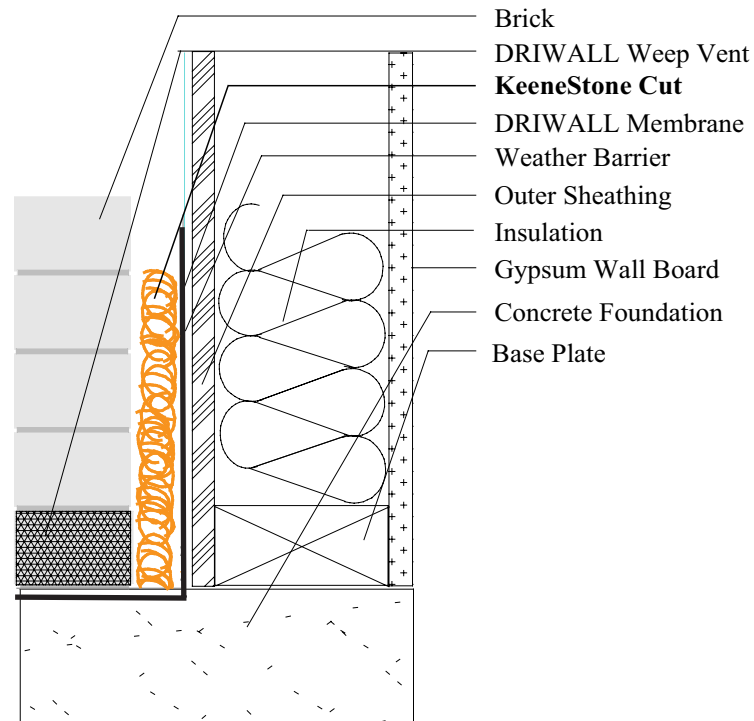


Installation Instructions

KeeneStone™ Cut

A Masonry Drainage Device



Inspection of Membrane and Wall Conditions

Ensure that the wall is free from structural defects, that any membranes, flashing and/or insulation are properly installed, and that the final system will have a path for moisture to escape from the wall.

Installation of KeeneStone™ Cut

KeeneStone™ Cut can be installed by simply placing a continuous strip in the cavity at all flashing locations. Place horizontally on top of the flashing with the KeeneStone™ Cuts pointing upwards to ensure that the mortar droppings are broken up and deflected away from the weep holes. Mechanical attachment is not required.