

STUCCO

CODE COMPLIANT  
LATH

**DRIWALL™ RAINSCREEN**

WATER RESISTANT  
BARRIER

EXTERIOR SHEATHING

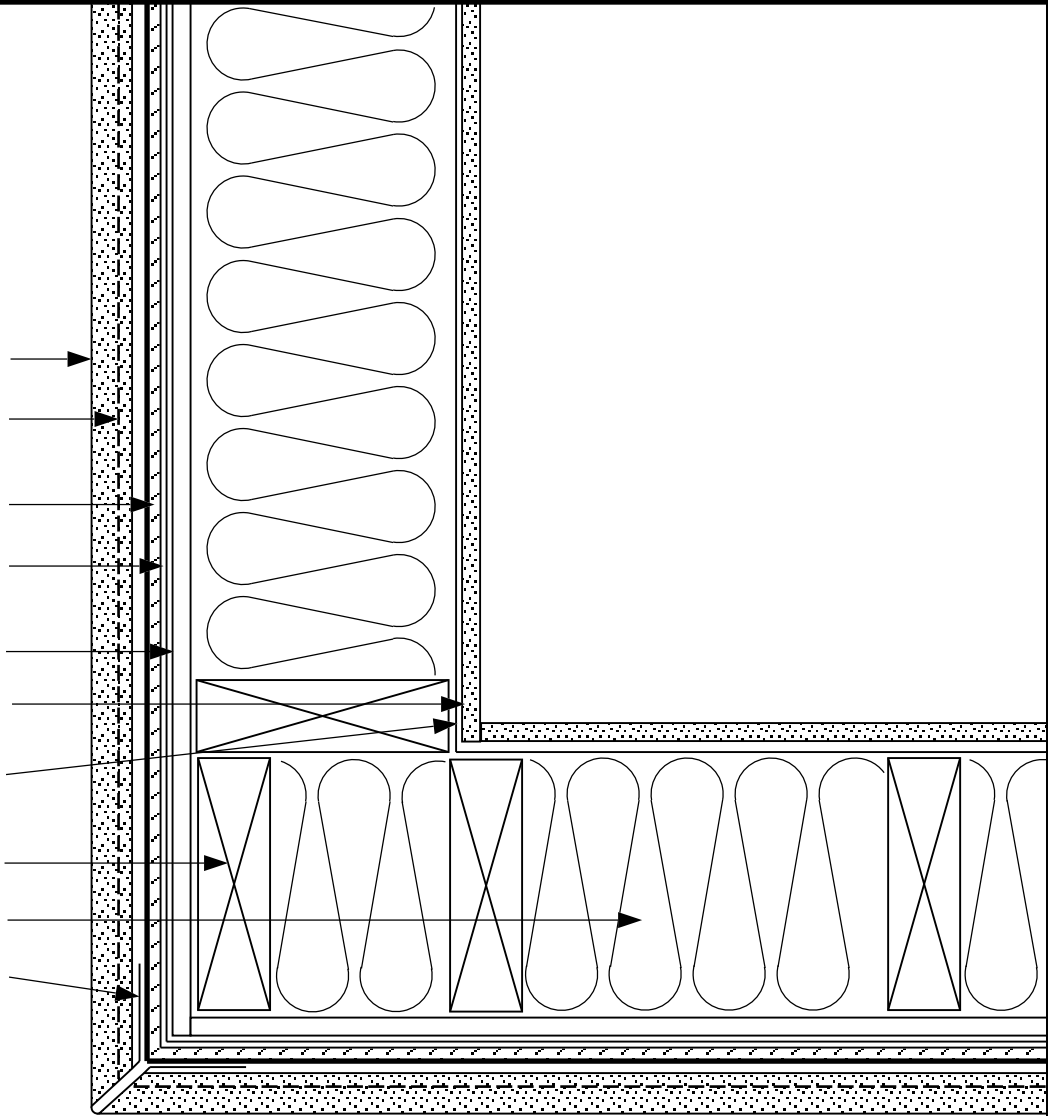
INTERIOR WALLBOARD

VAPOR BARRIER  
( IF REQUIRED )

FRAMING

INSULATION

CORNER BEAD  
( OPTIONAL )



SKETCH NO: SV-8

DATE: 1/1/11

SKETCH:  
**STUCCO VENEER  
EXTERNAL CORNER**

**Keene Building Products**  
P.O. Box 241353 Cleveland, OH 44124  
P ( 877 ) 514-5336 F ( 440 ) 605-1120  
[www.keenebuilding.com](http://www.keenebuilding.com)